

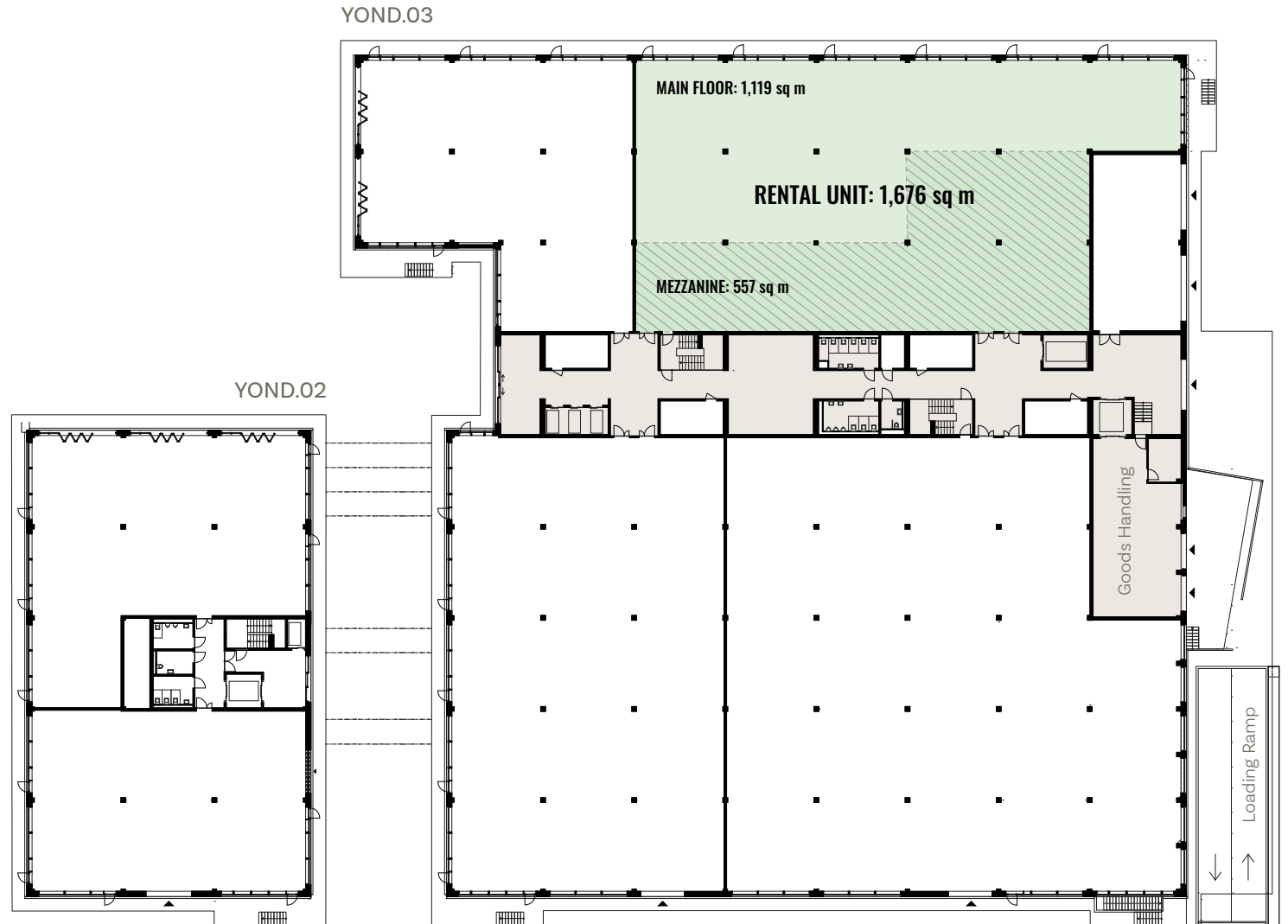
RENTAL UNIT D

YOND.03 | GROUND FLOOR

Rental unit Min	1,676 sq m
Of which main floor	1,119 sq m
Of which mezzanine of at least 60% Flexibly expandable up to 100%*	557 sq m
Ceiling Height rental unit	5.71 m
Ceiling Height main floor	2.68 m
Ceiling Height mezzanine	2.63 m
Floor load capacity, main floor**	2,000 kg/sq m
Floor load capacity, mezzanine	500 kg/sq m

* The scope of the mezzanine floor can be flexibly chosen by the tenant

** Beneath the mezzanine, the load capacity is reduced by 500 kg/sq m



Scale 1:600

